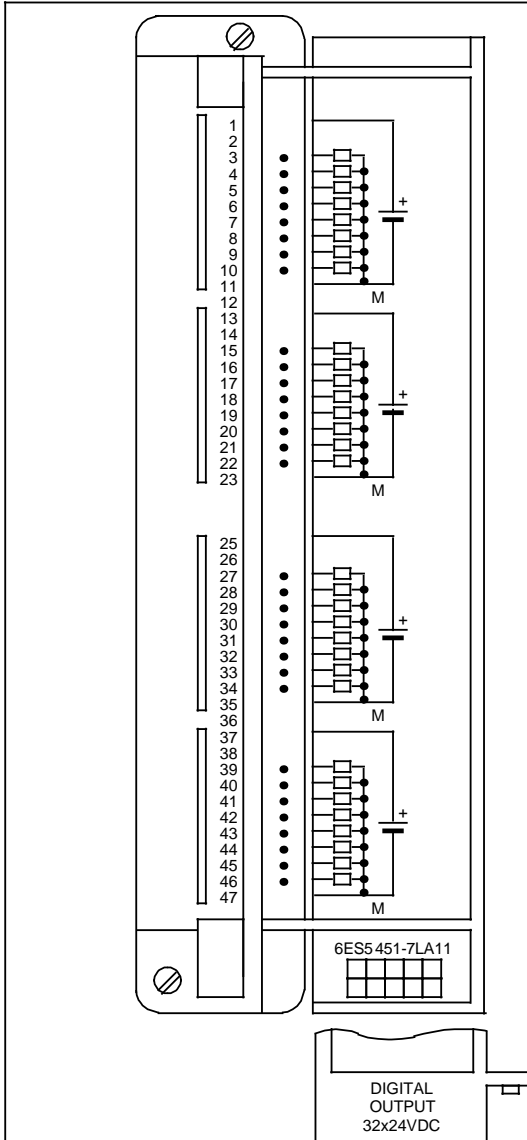
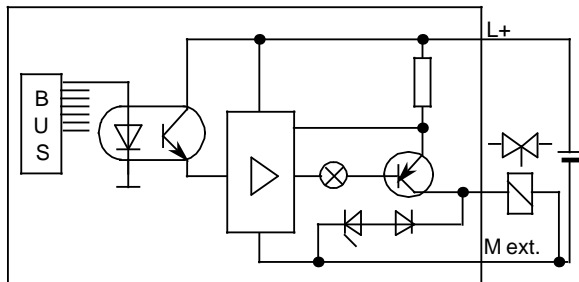


Digital Output Module 32 x 24 V DC; 0.5 A, Floating

(6ES5 451-7LA11)



Terminal Assignment



Simplified Schematic

Technical Specifications

<b>Number of outputs</b>		32
<b>Galvanically isolated</b>		yes (optocoupler)
- in groups of		8
<b>Load voltage L+</b>		
- rated value		24 V DC
- permissible range		20 to 30 V
- surge voltage at t 0.5 sec.		35 V
<b>Output voltage</b>		
- for "1" signal	min.	L+ -2.5 V
<b>Output current</b>		
for "1" signal		
- rated value		0.5 A
- lamp load	max.	5 W
<b>Leakage current</b>		
for "0" signal	max.	1 mA
<b>Parallel connection of outputs</b>		not possible
<b>Permissible total current of outputs</b>		100% at 25°C and 50% at 55°C (related to the sum of the currents)
<b>Short circuit protection</b>		electronic
<b>Limitation of the voltage induced on circuit interruption</b>		- 15 V
<b>Switching frequency</b>		
- inductive load	max.	0.5 Hz
- resistive load	max.	100 Hz
<b>Cable length</b>		
- shielded		1000 m (3281 ft.)
- unshielded		600 m (1969 ft.)
<b>Isolation rating</b>		according to VDE 0160
<b>Rated isolation voltage (between groups)</b>		30 V DC
- isolation group		C
- tested at		500 V AC
<b>Rated isolation voltage (L+ to <math>\perp</math>)</b>		30 V DC
- isolation group		C
- tested at		500 V AC
<b>Current consumption</b>		
- from 5 V (internal)		100 mA
- from L+ (without load)		17 mA / per group
<b>Power losses of the module</b>	typ.	20 W
<b>Weight</b>	approx.	0.7 kg (1.54 lb.)