

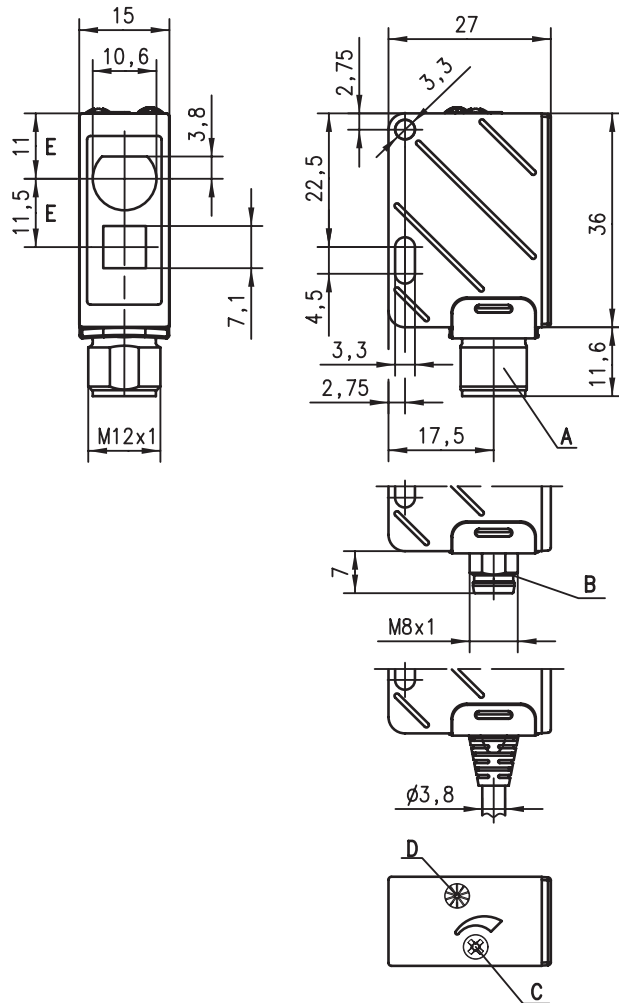


RTR 25

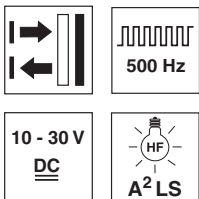
Energetic diffuse reflection light scanner



Dimensioned drawing



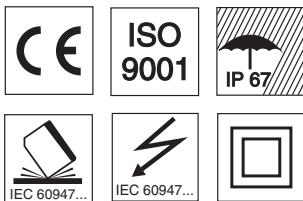
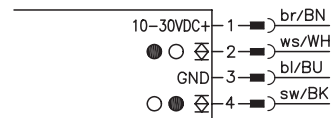
- A M12 connector
- B M8 connector
- C Scanning range adjustment
- D Indicator diode
- E Optical axis



5 ... 800mm

- Adjustable scanning range
- A²LS - active suppression of extraneous light
- Push-pull switching outputs

Electrical connection



Accessories:

(available separately)

- M12 connectors (KD ...)
- Cable (KB ...)
- Mounting systems

We reserve the right to make changes • 25_d03e.fm

Specifications

Optical data

Typ. scanning range limit (white 90%) ¹⁾	5 ... 800mm
Scanning range ²⁾	see tables
Mechanical adjustment range	40 ... 800mm
Light source	LED (modulated light)
Wavelength	660nm (red light)

Timing

Switching frequency	500Hz
Response time	1 ms
Delay before start-up	≤ 100ms

Electrical data

Operating voltage U_B	10 ... 30VDC (incl. residual ripple)
Residual ripple	≤ 15% of U_B
Bias current	≤ 20mA
Switching output/function	2 push-pull switching outputs ³⁾ pin 2: PNP dark switching, NPN light switching pin 4: PNP light switching, NPN dark switching
Signal voltage high/low	≥ ($U_B - 2V$) ≤ 2V
Output current	max. 100mA
Scanning range adjustment	mechanical via multiturn potentiometer

Indicators

LED yellow	object detected
------------	-----------------

Mechanical data

Housing	plastic
Optics cover	plastic
Weight (plug/cable)	15g/55g
Connection type	M8 and M12 connector, 4-pin, or cable 2000mm, 4 x 0.25mm ²

Environmental data

Ambient temp. (operation/storage)	-20°C ... +55°C/-40°C ... +70°C
Protective circuit ⁴⁾	2, 3
VDE safety class ⁵⁾	II, all-insulated
Protection class	IP 67
LED class	1 (acc. to EN 60825-1:1994 +A1:2002 +A2:2001)
Standards applied	IEC 60947-5-2

- 1) Typ. scanning range limit: max. attainable range without performance reserve
- 2) Scanning range: recommended range with performance reserve
- 3) The push-pull switching outputs must not be connected in parallel
- 4) 2=polarity reversal protection, 3=short-circuit protection for all outputs
- 5) Rating voltage 250VAC

Tables

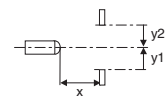
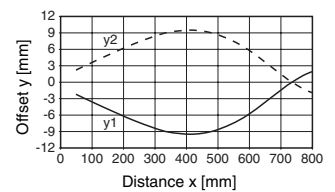
1	7	700	800
2	9	480	530
3	12	380	400

1	white 90%
2	grey 18%
3	black 6%

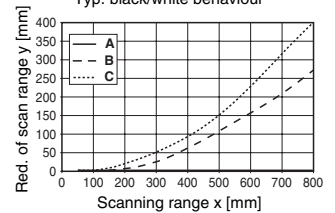
<input type="checkbox"/>	Scanning range [mm]
<input type="checkbox"/>	Typ. scanning range limit [mm]

Diagrams

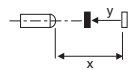
Typ. response behaviour (white 90%)



Typ. black/white behaviour



- A** white 90%
- B** grey 18%
- C** black 6%



Order guide

	Designation	Part No.
with M12 connector	RTR 25/66-700-S12	500 39545
with M8 connector	RTR 25/66-700-S8	500 39544
with 2m cable	RTR 25/66-700	500 39543

Remarks